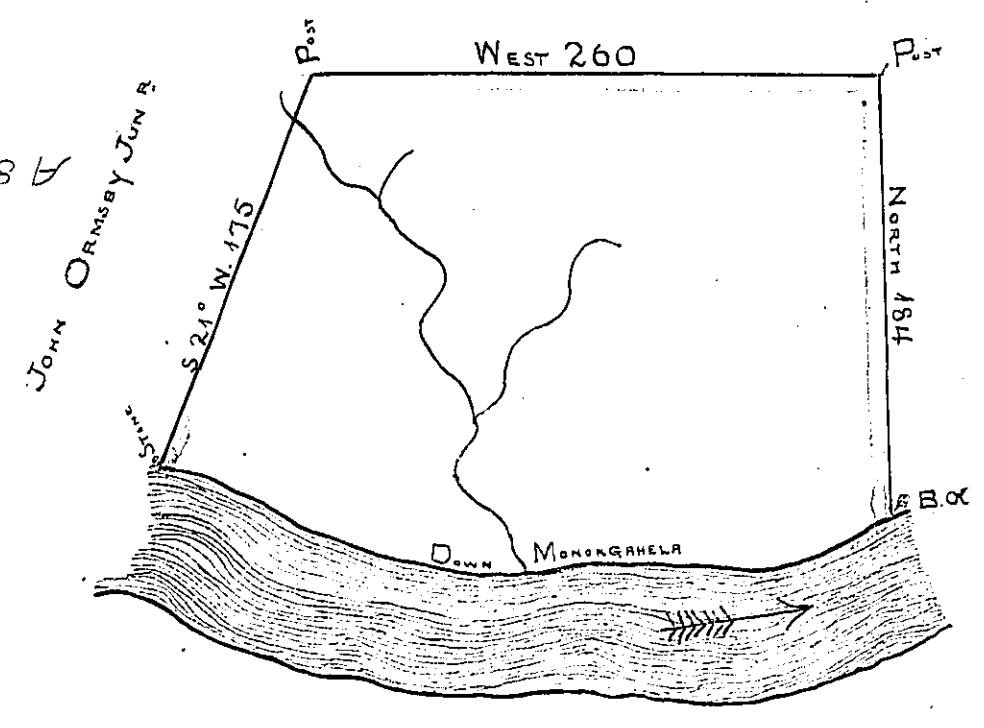


OLIVER ORMSBY
91-091 C

COURSES UP MONONGAHELA }
N 79° E 137
EAST 59
S. 75 E 59
S. 66 E 80
A 88-88 B



Manor Book
Page 15

In pursuance of an Order N° 41 dated 24th May 1769
the above is a draught of a tract of land Call'd Ormsby's
Villa Containing 340 Acres & the usual allowance of 600
for Roads &c Situated on the West Side Monongahela Survey'd
27th June 1769 for John Ormsby
By James Hendricks D.S.
To John Lukens Esq
Surveyor General

IN TESTIMONY that the above is a copy of the original remaining on file in the
Department of Internal Affairs of Pennsylvania, made con-
formably to an Act of Assembly approved the 16th day of
February, 1833, I have hereunto set my Hand and caused
the Seal of said Department to be affixed at Harrisburg, this
Fifteenth day of September 1877

Wm M'andlep
Secretary of Internal Affairs